



Newfoundland & Labrador

PROVINCIAL PUBLIC HEALTH LABORATORY NETWORK

Dr. LA Miller Centre, 100 Forest Road, St. John's, NL A1A 3Z9

(709) 777-7233

www.publichealthlab.ca

MEMORANDUM

TO: ALL HEALTH CARE PROVIDERS IN NEWFOUNDLAND AND LABRADOR

FROM: PUBLIC HEALTH MICROBIOLOGY LABORATORY

RE: FLU TESTING MEMORANDUM – FALL 2019

Diagnostic testing for seasonal influenza (FLU) and other respiratory infectious agents is centralized at the Public Health Microbiology Laboratory (PHML). All specimens from Inpatients will be prioritized for processing. Outpatient specimens may be declined during peak flu season once the circulating strain is identified. If a specimen on an outpatient is a priority for medical management, please provide clinical context on the requisition for triage by the Microbiologist On Call (MOC).

Test Methodology

A molecular multiplex assay detects 11 respiratory pathogens including the FLU virus. Supplemental H antigenic subtyping will be performed on a proportion of positive FLU A specimens and in any patients flagged to CDC/public health for having risk factors of being potentially infected with an emerging FLU subtype.

Availability of Testing Service

Testing services are offered 7 days per week and any urgent/stat requests after hours are to be approved by the MOC who can be reached through 709 777 6300 or microbiologistoncall@easternhealth.ca.

Results will be reported within 24 h of specimen receipt at the PHML.

Specimen Collection Swab and Transport Medium

Specimens should be collected using non-expired **flocked swab** and submitted in non-expired **universal transport medium (UTM)**. These are supplied by the PHML to all regional hospital labs. Please contact your regional microbiology lab to obtain the supplies. Clinics in the St. John's area should contact the PHML directly.

Recommended Respiratory Specimens

- **Nasopharyngeal swab** or **nasal aspirate** is the appropriate specimen.
- For intubated patients, an endotracheal aspirate or bronchoalveolar lavage (BAL).

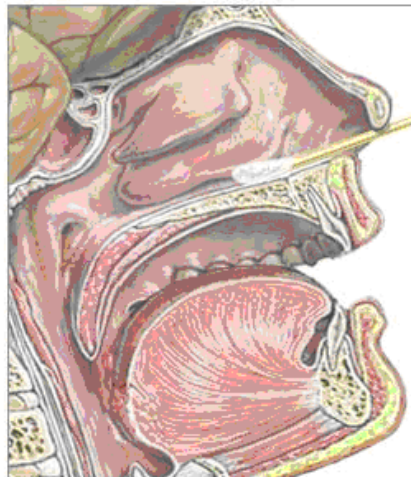
Instructions for Specimen Collection, Submission and Transmission

- Specimens should be collected **ASAP** and no later than the **first three days after symptom onset**; those taken later are less likely to detect the pathogen. Detailed collections instructions are below.
- Include relevant clinical data on test requisition. In all areas, order test mnemonic, **RESVIP**.
- Refrigerate specimens promptly after collection. All clinics should channel specimens through their regional hospital labs. Regional labs should courier specimens to the PHML as soon as possible, or within 72 hrs on ice packs. If a longer delay is anticipated, specimens must be frozen at -70°C and shipped on dry ice.

For additional information, check www.publichealthlab.ca or contact PHML. Telephone: 709 777-6583

Instructions for Collection of Nasopharyngeal Swab

1. Use a NON-EXPIRED swab supplied with the universal transport media.
2. Explain the procedure to patient.
3. When collecting the specimens, wear eye protection, gloves, and a mask. Change gloves and wash your hands between each patient.
4. If the patient has a lot of mucus in the nose, this can interfere with the collection of cells. Either ask the patient to use a tissue to gently clean out visible nasal mucus or clean the nostril yourself with a cotton swab (e.g. Q-Tip).
5. How to estimate the distance to the nasopharynx: Prior to insertion, measure the distance from the corner of the nose to the front of the ear and insert the shaft approximately $\frac{2}{3}$ of this length.
6. Seat the patient comfortably. Tilt the patient's head back slightly to straighten the passage from the front of the nose to the nasopharynx to make insertion of the swab easier.
7. Insert the swab along the medial part of the septum, along the floor of the nose, until it reaches the posterior nares; gentle rotation of the swab may be helpful. (If resistance is encountered, try the other nostril; the patient may have a deviated septum.)
8. Allow the swab to sit in place for 5-10 seconds.
9. Rotate the swab several times to dislodge the columnar epithelial cells. *Note: Insertion of the swab usually induces a cough.*
10. Withdraw the swab and place it in the collection tube. Replace cap securely.
11. Refrigerate immediately.
12. Remove gloves.
13. Wash hands.
14. Attach completed requisition.
15. Transport to the laboratory.



A sterile swab is passed gently through the nostril and into the nasopharynx

For a video on collection of an NP swab please see: <http://www.youtube.com/watch?v=TFwSefezIHU>